

RECEIVED
LARAMIE COUNTY
CHEYENNE, WY.

'93 DEC 14 PM 1 40

CERTIFIED LAND CORNER RECORDATION

DESCRIPTION OF CORNER EVIDENCE FOUND, AND ORIGINAL RECORD (if known)

RECORDED: EDWIN JAMES, U.S. DEPUTY SURVEYOR, JUNE 21, 1870

80.00 CHAINS SET A LIMESTONE 20X10X6 FOR CORNER TO SECTIONS 13 & 24.

FOUND: NOTHING AFTER A DILIGENT AND EXHAUSTIVE SEARCH FOR ORIGINAL STONE.

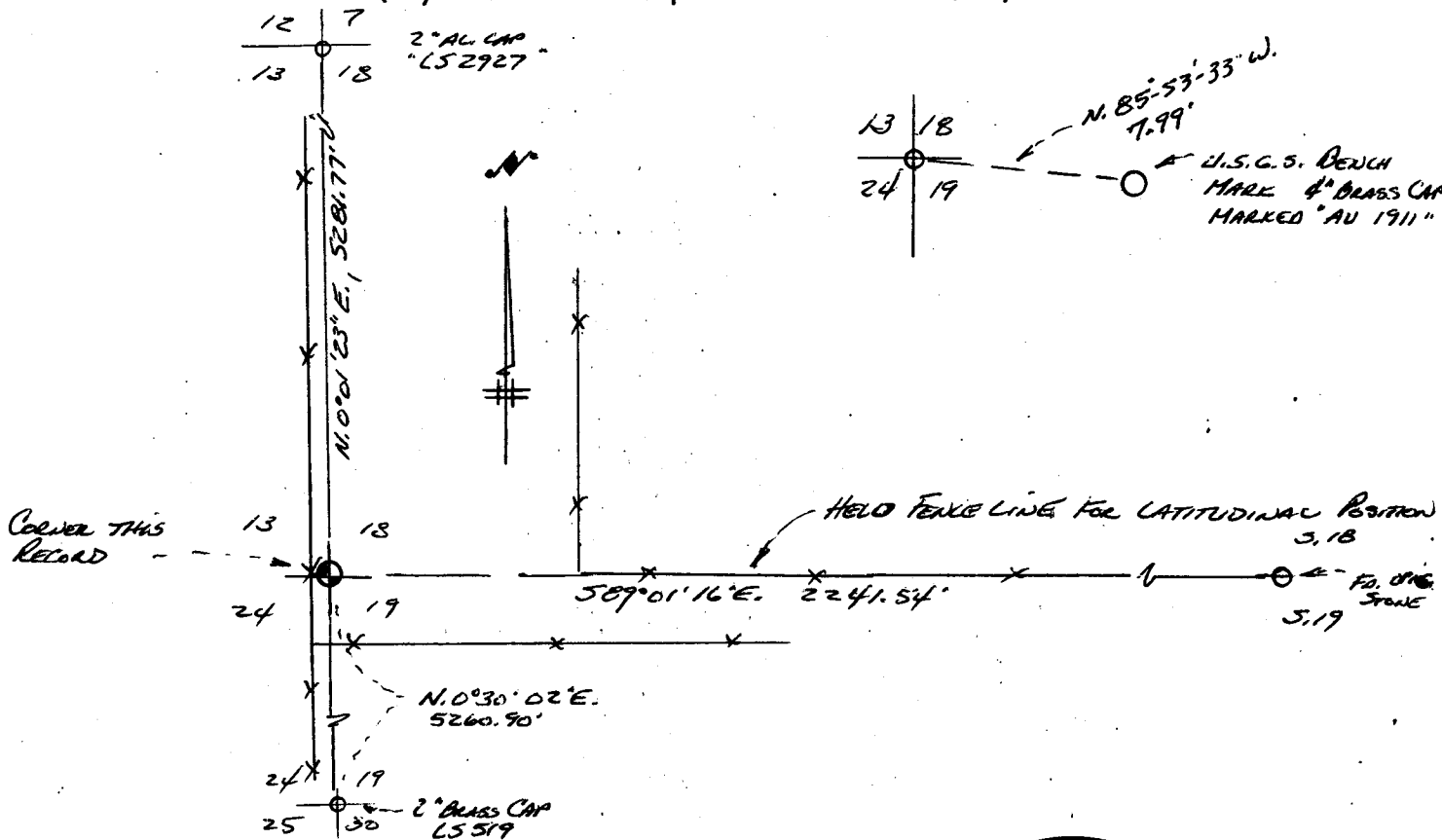
DESCRIPTION OF MONUMENT AND ACCESSORIES ESTABLISHED TO PERPETUATE THE ORIGINAL LOCATION OF THIS CORNER:

SET: AT THE ~~LATITUDINAL~~ LATITUDINALLY HELD FENCE LINE EAST WHERE ORIGINAL STONES WERE FOUND IN SAID FENCE LINE AND ACCEPTED AS THE SECTION LINE AND THE NORTH SOUTH FENCE LINE INTERSECTION, I SET A NO. 5 X 24" REBAR WITH 2" ALUMINUM CAP MARKED

T. 16 N.
R. 513 | 518 R.
65 | 524 | 519 64
W. 65 | 24 | 19 W.

SKETCH, WITH COURSE AND DISTANCE TO ADJACENT CORNER IF DETERMINED IN THIS SURVEY.

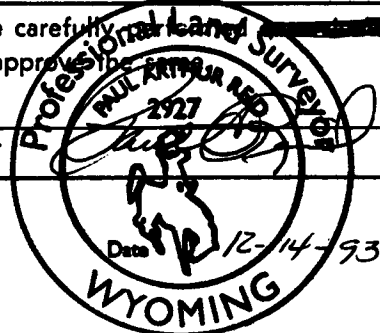
(May Sketch or Paste Reproduction on Reverse Side.)



I, PAUL A. REID certify that I have carefully examined the work done on the diagrammed corner as reported on this recordation form and approved the same.

Signature of Surveyor

Registration No.



STATE OF WYOMING,
Office of Clerk and Recorder,
County of _____

This "corner record" was filed for record on the _____ day of _____, 19____, was noted on the cross-index plat and is assigned page No. _____, in book No. _____.

T. 16 N.

R. 13 | 18 R.
65 | 24 | 19 64
W. | | W.

County Official		
Cross Index No. <u>N-25</u>	T. <u>16 N.</u>	R. <u>65 W. 65</u> Mer.
_____	T. _____	R. _____ Mer.
_____	T. _____	R. _____ Mer.
_____	T. _____	R. _____ Mer.
_____	T. _____	R. _____ Mer.
_____	T. _____	R. _____ Mer.
_____	T. _____	R. _____ Mer.